



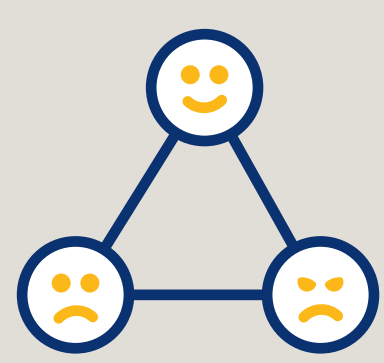
8 TYPES OF PSYCHOLOGY

A look at the study of psychology and eight fields within.

ABNORMAL PSYCHOLOGY

Focuses on the origin and constructs of mental illness, looking at unusual patterns of

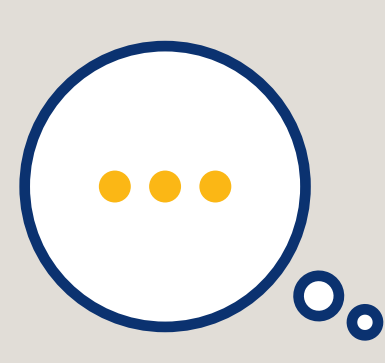
BEHAVIOR



EMOTIONS



THOUGHTS



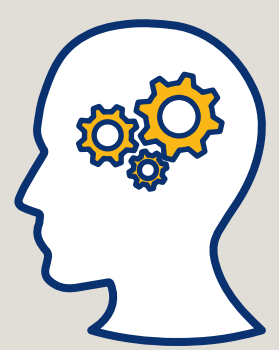
THE GIST

How deviations from the norm are addressed and treated.

SOCIAL PSYCHOLOGY

Examines what people

THINK



FEEL



THE GIST

How others impact our behavior.

DEVELOPMENTAL PSYCHOLOGY

Working with people of all ages, developmental psychologists

- Study how people grow & adapt, physically & psychologically
- Flag developmental delays & serious health issues
- Assist with interventions to get people back on track

THE GIST

See why cognitive, physical, personality and social factors play into how we evolve developmentally.

FORENSIC PSYCHOLOGY

Applying psychosocial knowledge to civil and criminal law, conducting forensic assessments for the court system to determine

CUSTODY EVALUATIONS & COMPETENCY TO STAND TRIAL

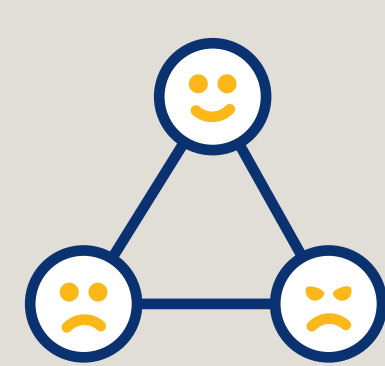
THE GIST

Why this field is called the intersection of psychology and law.

BIOPSYCHOLOGY

Concentrates on the relationship between

BEHAVIOR



BIOLOGY



THE GIST

How biological changes lead to changes in behavior.

COGNITIVE PSYCHOLOGY

Focuses on the processes underlying

**ATTENTION MEMORY LANGUAGE
PROBLEM SOLVING DECISION MAKING**

THE GIST

How specialized techniques are used to understand these processes.

PERSONALITY PSYCHOLOGY

Studying personality and how it varies among individuals, relying on research theories related to

**PERSONALITY TRAITS EVOLUTION BIOLOGY
HUMANISM BEHAVIOR SOCIAL LEARNING**

THE GIST

Why it's important to understand how personality develops and its similarities and differences between individuals.

INDUSTRIAL-ORGANIZATIONAL PSYCHOLOGY

Focused on the scientific study of working, this field has critical relevance to individuals, businesses and society by

- Applying research to issues facing employees, teams, and organizations
- Examining employee well-being and attitude, employer-to-employee relationships and overall workplace behavior

THE GIST

How workplace relationships affect lives on the job and beyond.